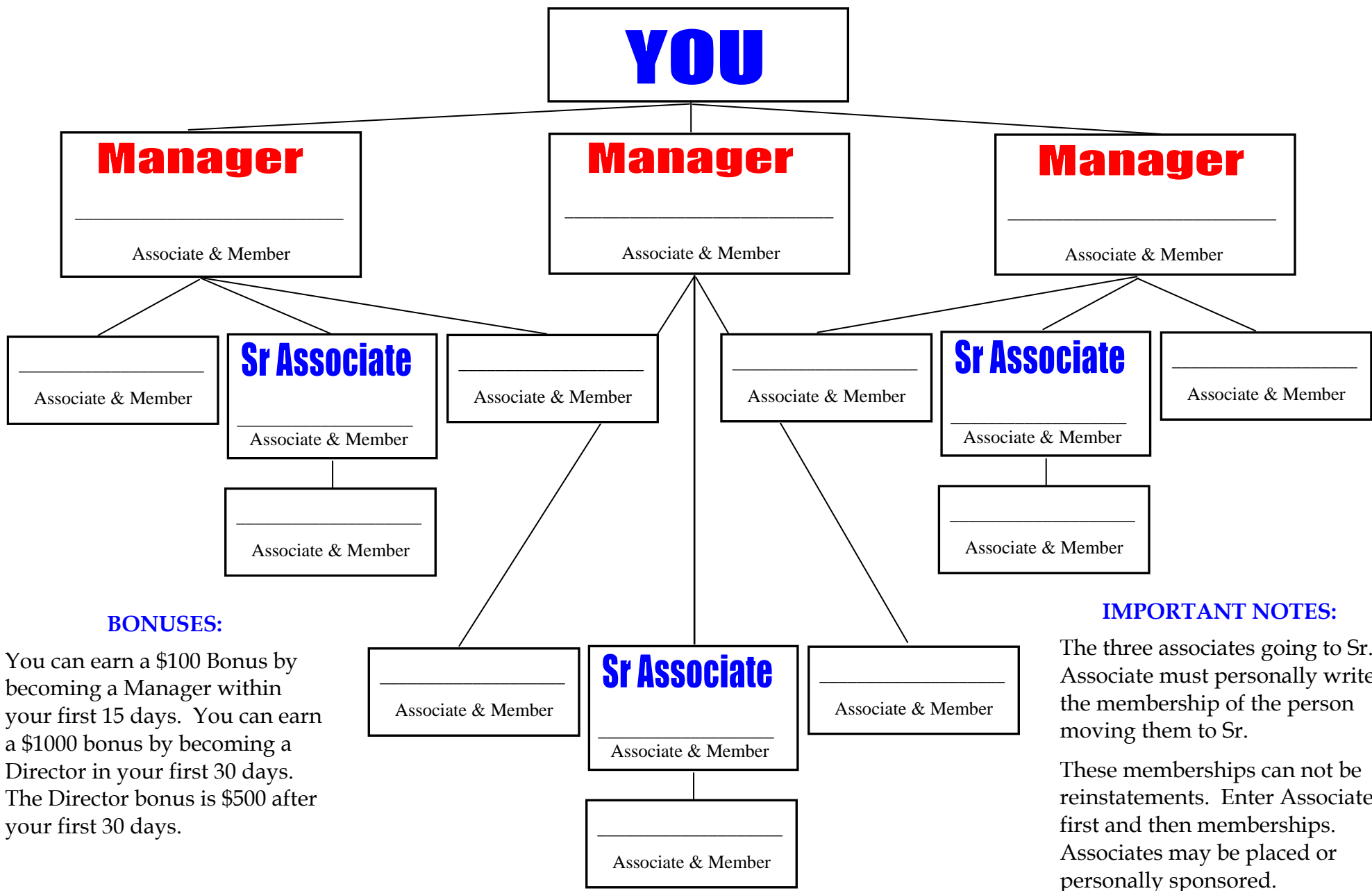


DRIVE TO DIRECTOR CHART



BONUSES:

You can earn a \$100 Bonus by becoming a Manager within your first 15 days. You can earn a \$1000 bonus by becoming a Director in your first 30 days. The Director bonus is \$500 after your first 30 days.

IMPORTANT NOTES:

The three associates going to Sr. Associate must personally write the membership of the person moving them to Sr.

These memberships can not be reinstatements. Enter Associate first and then memberships. Associates may be placed or personally sponsored.